

ESTIMATE

Name of work :-

Proposed Construction of Warehouse at Gat No
72/2 of shivar Kasali at village Kasali Tal. **Jamner**
; Dist -Jalgaon

Estimate Cost Rs. 18000000.00

Owner :- Late Sambhaji Patil Agriculture
Producer Company Limited At Po. Kasali Tal.
Jamner Dist. Jalgaon

Name of work :-

Proposed Construction of Warehouse at Gat No 72/2 of shivar Kasali at village Kasali Tal. Jamner ; Dist -Jalgaon

Owner :- Late Sambhaji Patil Agriculture Producer Company Limited At Po. Kasali Tal. Jamner Dist. Jalgaon

RECAPITULATION SHEET.

Cost of work portion	Rs.	15178691.00
Cost of Royalty		326852.38
Net Amount	Rs.	14851838.62
Add 18 % GST (Ex 18 %)		2673330.952
Add royalty as per abstract		326852.38
Add 1 % Labour Insurance (Ex 1%)		148518.39
Total.	Rs.	18000540.34
GRAND TOTAL		18000540.34
SAY RS		18000000

Prajakta V. Patil (BE.Civil)
Consulting Engineer & Cont.
Pachora Rd, Jamner (M.L.No.....)

ESTIMATE

Division : --
Sub Division : --
Sanctioned estimate no. : --
FUND HEAD : --
MAJOR HEAD : --
MINOR HEAD : --
SERVICE HEAD : --
DEPARTMENTAL HEAD : --

Proposed Construction of Warehouse at Gat No 72/2 of shivar Kasali at village-
Kasali Tal. Jamner ; Dist -Jalgaon

Estimated Cost Rs.

180000 00.00

Administratively approved under ..

Date :

No.

Technically Sanctioned under ..

Date :

No.

Estimate is Prepared by

Shri

And Checked by

Shri

GENERAL DESCRIPTION

--- As per Separate sheet enclosed ---

Name of work :-

Proposed Construction of Warehouse at Gat No 72/2 of shivar Kasali at village Kasali Tal. Jamner ; Dist -Jalgaon

ABSTRACT

Qty.	Item in Brief	Rate	Unit	Amount
274.85 Cu.M.	Item No :- 1 Excavation for foundation in earth, soil of all types, sand, gravel and soft murum, including removing the excavated material up to a distance of 50 m. beyond the building area and stacking and spreading as directed, dewatering, preparing the bed for the foundation and necessary back filling, ramming, watering including shoring and strutting etc. complete. (Lift upto 1.5 m.) S.S.R I/P.No. 21.02	207.00	Cu.M.	56893.95
45.26 Cu.M.	Item No :- 2 Providing dry/ trap/ granite/ quartzite/ gneiss rubble stone soling 15 cm to 20 cm thick including hand packing and compacting etc. complete. S.S.R I/P.No. 21.38	2009.84	Cu.M.	90965.25
22.63 Cu.M.	Item No :- 3 Providing and laying Cast in situ/Ready Mix cement concrete in M-10 of trap/ granite/ quartzite/ gneiss metal for foundation and bedding including bailing out water, formwork, laying/pumping, compacting, roughening them if special finish is to be provided, finishing if required and curing complete, with fully automatic micro processor based PLC with SCADA enabled reversible Drum Type mixer/concrete Batch mix plant (Pan mixer) etc. complete. With natural sand/V.S.I. quality Artificial Sand S.S.R I/P.No. 24.01	6601.00	Cu.M.	149380.72
29.27 Cu.M.	Item No :- 4 Providing and laying in situ/Ready Mix cement concrete M-20 of trap / granite /quartzite/ gneiss metal for R.C.C. work in foundations like raft, strip foundations, grillage and footings of R.C.C. columns and steel stanchions etc. including bailing out water, formwork, laying/pumping cover blocks, compaction and curing roughening the surface if special finish is to be provided (Excluding reinforcement and structural steel) etc. complete, with fully automatic micro processor based PLC with SCADA enabled reversible Drum Type mixer/ concrete Batch mix plant (Pan mixer) etc. complete. With natural sand/V.S.I. quality Artificial Sand S.S.R I/P.No. 25.11	7850.95	cum	229797.35

Qty.	Item in Brief	Rate	Unit	Amount
11.35 Cu.M.	<p>Item No :- 5</p> <p>Providing and laying Cast in situ/Ready Mix cement concrete M-20 of trap / granite /quartzite/ gneiss metal for R.C.C. columns as per detailed designs and drawing or as directed including centering, formwork, cover blocks, laying/pumping, compaction finishing the formed surfaces with cement mortar 1:3 of sufficient minimum thickness to give a smooth and even surface or roughening if special finish is to be provided and curing etc. complete,(Excluding reinforcement and structural steel).with fully automatic micro processor based PLC with SCADA enabled reversible Drum Type mixer/ concrete Batch mix plant (Pan mixer) etc. complete. With natural sand/V.S.I. quality Artificial Sand S.S.R I/P.No. 25.31</p>	14529.95	Cu.M.	164914.95
45.09 Cu.M.	<p>Item No :- 6</p> <p>Providing and laying Cast in situ/Ready Mix cement concrete M-20 of trap / granite /quartzite/ gneiss metal for R.C.C. beams and lintels as per detailed designs and drawings or as directed including centering, formwork, cover blocks, laying/pumping, compaction and roughening the surface if special finish is to be provided and curing etc. complete. (Excluding reinforcement and structural steel). with fully automatic micro processor based PLC with SCADA enabled reversible Drum Type mixer/ concrete Batch mix plant (Pan mixer) etc. complete. With natural sand/V.S.I. quality Artificial Sand S.S.R I/P.No. 25.5</p>	13015.95	Cu.M.	586902.26
235.60 cum	<p>Item No :- 7</p> <p>Providing and laying <u>Cast in situ/Ready Mix</u> cement concrete M-20 of trap/ granite / quartzite/ gneiss metal for R.C.C. slabs and landings as per detailed designs and drawings including centering, formwork, cover blocks, laying/pumping, compaction finishing the formed surfaces with cement mortar 1:3 of sufficient minimum thickness to give a smooth and even surface or roughening if special finish is to be provided and curing etc. complete,(Excluding reinforcement and structural steel).with fully automatic micro processor based PLC with SCADA enabled reversible Drum Type mixer/ concrete Batch mix plant (Pan mixer) etc. complete. With natural sand/V.S.I. quality Artificial Sand S.S.R I/P.No. 25.7</p>	14678.95	cum	3458360.95

Qty.	Item in Brief	Rate	Unit	Amount
0.06 Cu.M.	Item No :- 8 Providing and laying Cast in situ/Ready Mix cement concrete M-20 of trap/ granite/ quartzite/ gneiss metal for R.C.C. chajja as per detailed design and drawings including centering, formwork, cover blocks compacting , curing , finishing and roughening the surface if special finish is to be provided and curing complete. (Excluding reinforcement and structural steel).with fully automatic micro processor based PLC with SCADA enabled reversible Drum Type mixer/ concrete Batch mix plant (Pan mixer) etc. complete. With natural sand/V.S.I. quality Artificial S.S.R I/P.No. 26.05	14678.95	Cu.M.	939.45
38.14 Cu.M.	Item No :- 9 Providing second class Burnt Brick masonry with conventional/ I.S. type bricks in cement mortar 1:6 in foundations and plinth of inner walls/ in plinth external walls including bailing out water manually , striking joints on unexposed faces, raking out joints on exposed faces and watering etc. Complete. S.S.R I/P.No. 27.01	9081.06	Cu.M.	346342.72
819.49 Cu.M.	Item No :- 10 Filling in plinth and floors with contractors material/brought from outside and approved by Engineer incharge in layers of 15 cm to 20 cm including watering and compaction etc. complete. S.S.R I/P.No. 21.37	599.00	Cu.M.	490874.51
307.31 Cu.M.	Item No :- 11 Providing soling using 80 mm size trap metal in 15 cm. layer including filling voids with Crushed sand/grit, ramming, watering etc. complete. S.S.R I/P.No. 21.4	1945.80	Cu.M.	597963.80
62.62 Cu.M.	Item No :- 12 Providing second class Burnt Brick masonry with conventional/ I.S. type bricks in cement mortar 1:6 in superstructure including striking joints, raking out joints, watering and scaffolding etc. Complete S.S.R I/P.No. 27.05	9320.06	Cu.M.	583 603.80
30.25 M.T.	Item No :- 13 Providing and fixing in position TMT - FE - 500 bar reinforcement of various diameters for R.C.C. pile caps, footings, foundations, slabs, beams columns, canopies, staircase, newels, chajjas, lintels pardis, copings, fins, arches etc. as per detailed designs, drawings and schedules. including cutting, bending, hooking the bars, binding with wires or tack welding and S.S.R I/P.No. 26.33	90011.99	M.T.	2722862.70

Qty.	Item in Brief	Rate	Unit	Amount
291.71	Item No :- 14 Providing internal cement plaster 20mm thick in Single coats in cement mortar 1:5 without neeru finish, to concrete, brick surface, in all positions including scaffolding and curing etc. S.S.R I/P.No. 32.06	400.76	Sq.M.	116907.06
1.62 Sq.M.	Item No :- 15 Providing internal cement plaster 6 mm thick in a single coat in cement mortar 1:4 without neeru finish to concrete surface in all positions including scaffolding and curing etc. complete. S.S.R I/P.No. 32.02	216.79	Sq.M.	351.20
291.71 Sq.M.	Item No :- 16 G.F. Providing neeru finish to plastered surfaces in all positions including scaffolding and curing etc. complete. S.S.R I/P.No. 32.15	65.00	Sq.M.	18961.28
493.66 Sq.M.	Item No :- 17 Providing sand faced plaster externally in cement mortar using approved screened sand, in all positions including base coat of 15 mm thick in cement mortar 1:4 using waterproofing compound at 1 kg per cement bag curing the same for not less than 2 days and keeping the surface of the base coat rough to receive the sand faced treatment 6 to 8 mm thick in cement mortar 1:4 finishing the surface by taking out grains and curing for fourteen days scaffolding etc.complete. S.S.R I/P.No. 32.11	673.55	Sq.M.	332503.13
5.05 R.M.	Item No :- 18 Providing and fixing M40 grade thick vibrated pull cast or similar type concrete frame with chamfer conforming to I.S. 65241983 having 6 mm dia. bars 3 Nos. And stirrups @250 mm c/c and fixing in wall with 6 Nos of hold fast of 12 mm dia bars 500 mm long including primer and oil painting etc, complete) frame size 60 mm x 100 mm . S.S.R I/P.No. 39.57	1144.00	R.M.	5777.20
4.84 Sq.M.	Item No :- 19 Providing and fixing solid core flush door shutter commercial in single leaf 32 mm thick without ventilator commercial type of exterior grade as per detailed drawings with wrought iron hold fast, stainless steel fixtures and fastenings and handles on both sides and finishing with oil painting 3 coats S.S.R I/P.No. 39.1	2913.00	Sq.M.	14098.92

Qty.	Item in Brief	Rate	Unit	Amount
1.80 Sq.M.	<p>Item No :- 20</p> <p>Providing and fixing in position (as per 1868 / 1982) Aluminium sliding window of three tracks with rectangular pipe 95 x 38.10 x 0.90 mm at weight 0.637 Kilogram/One Running Metre. with window frame bottom track section 92 x 31.75 x 1.30 mm at weight 1.070 Kilogram/One Running Metre.. Top and side track section 92 x 31.75 x 1.30 mm at weight 0.933 Kilogram/Running metre. The shutter should be of bearing bottom 40 x 18 x 1.25 mm at weight 0.417 Kilogram/One Running Metre. Inter locking section 40 x 18 x 1.10 mm at weight 0.469 Kilogram/Running metre. and handle and top section 40 x 18 x 1.25 mm at weight 0.417 Kilogram/Running metre. As per detailed drawings and as directed by Engineerincharge with all necessary Aluminium sections fixtures and fastenings such as roller bearing in nylon casting and self locking catch fitted in vertical section of shutter including 5 mm thick plain glass and aluminium mosquito net shutter with stainless steel jail with all required screws and nuts etc, complete. With colour Anodising without box</p> <p>S.S.R I/P.No. 39.42</p>	5425.00	Sq.M.	9765.00
0.27 Sq.M.	<p>Item No :- 21</p> <p>Providing and fixing in position powder coated aluminium louvered windows / ventilator of various sizes with powder coating as per detailed drawing and specifications including aluminium frames 80 x 38 mm x 1.22 mm box type, 5 mm thick sheet glass louvers, of approved quality etc.</p> <p>complete S.S.R I/P.No. 39.68</p>	3467.00	Sq.M.	936.09
31.05 Sq.M.	<p>Item No :- 22</p> <p>Providing and fixing M.S. grill door 24 Kilogram/ One Square Metre of various size as per detailed drawings without hot dip coating, iron fixtures and fastenings and 3 coats of oil painting</p> <p>S.S.R I/P.No. 39.31</p>	3258.00	Sq.M.	101160.90

Qty.	Item in Brief	Rate	Unit	Amount
87.60 Sq.M.	<p>Item No :- 23</p> <p>Providing and fixing rolling shutter fabricated from steel laths of minimum thickness 0.9 mm with lock plate of 3.15 mm thickness reinforced with 35 x 35 x 5 mm angle section fitted with sliding bolts and handles for both sides, deep M.S. channel section of depth and thickness not less than 65 mm and 3.15 mm respectively with hold fast arrangements, M.S. Bracket plate 300 x 300 x 3.15 mm minimum size and shape with square bar, suspension shaft of minimum 32 mm diameter, hood cover of M.S. sheet not less than 0.9 mm thickness and of any size at top and safety devices including mechanical gear operation arrangement consisting of worm gear wheels and worms of high grade cast iron or mild steel and one coat of red lead primer etc. complete. (I.S. 62481979) (Without mechanical gear)</p> <p>S.S.R I/P.No. 39.24</p>	4829.00	Sq.M.	423020.40
293.33 Sq.M.	<p>Item No :- 24</p> <p>Providing and applying washable oil-bound distemper of approved colour and shade to old and new surfaces in two coats including scaffolding, preparing the surfaces. (excluding the primer coat.) etc. complete.</p> <p>S.S.R I/P.No. 36.09</p>	29.00	Sq.M.	8506.63
493.66 Sq.M.	<p>Item No :- 25</p> <p>Providing and applying three coats of water proof cement paint of approved manufacture and of approved colour to new plastered surfaces including scaffolding if necessary, cleaning and preparing the surface, watering for two days etc. complete.</p> <p>S.S.R I/P.No. 35.15</p>	104.00	Sq.M.	51340.43
27.90	<p>Item No :- 26</p> <p>Providing structural steel work in trusses, other similar trussed purlins and members with all bracing, gusset plates etc. as per detailed designs and drawings or as directed including cutting, fabricating, hoisting, erecting fixing in position, Making riveted/ bolted/ welded connection and one coat of anticorrosive paint and over it 2 coats of oil painting approved quality and shade etc. complete.</p> <p>S.S.R I/P.No. 23.04</p>	119459.00	Sq.M.	3332906.10

Qty.	Item in Brief	Rate	Unit	Amount
1066.22	Item No :- 27 Providing and fixing corrugated galvanised iron sheets of 0.63mm thick (24 B.W.G.) for roofing without wind tiles including fastening with galvanised iron screws and bolts, lead and bitumen washers as per drawing etc. complete.(Weight of 5.5 S.S.R I/P.No. 38.04	870.00	Sq.M.	927611.40
225.00	Item No :- 28 A	216.18	cum	48640.50
1172.06	B	237.37	cum	278211.88
	Item No :- 49			
	Material testing			
	Cement			3770.00
	Aggregate			2600.00
	Sand			1380.00
	Steel			2870.00
	Ceramic,Vitrified tiles			1595.00
	Bricks			2175.00
	Mortor			6900.00
	Concrete			6900.00
		Total Rs.		15 17 8690.53
		Say Rs.		15 17 8691.00

15 17 8690.53

P. V. Patil
Prafulla V. Patil (BE.Civil)
 Consulting Engineer & Cont.
 Pachora Rd, Jamner (M.L.No.151.....)

Name of work :-
Proposed Construction of Warehouse at Gat No 72/2 of shivar Kasali at village Kasali Tal. Jamner ; Dist -
Jalgaon

MEASUREMENTS

Description	No	Length	Width	Depth	Quantity	Unit
Item No : 1						
Excavation for foundation in earth, soil of all types, sand, gravel and soft murum, including removing the excavated material up to a distance of 50 m. beyond the building area and stacking and spreading as directed, dewatering, preparing the bed for the foundation and necessary back filling, ramming, watering including shoring and strutting etc. complete. (Lift upto 1.5 m.)						
For Footing						
Column A	2 x 11	x 1.800	x 1.800	x 2.00	= 142.56	cum
Column B	2 x 5	x 1.600	x 1.600	x 2.00	= 51.20	cum
For Ramp	2 x 1	x 4.500	x 3.000	x 1.50	= 40.50	cum
For Ramp	2 x 1	x 4.510	x 3.000	x 1.50	= 40.59	cum
Total					274.85	Cum

Item No : 2
Providing dry/ trap/ granite/ quartzite/ gneiss rubble stone soling 15 cm to 20 cm thick including hand packing and compacting etc. complete.

For Footing Stabilisation						
Column A	2 x 11	x 1.800	x 1.800	x 0.30	= 21.38	cum
Column B	2 x 5	x 1.600	x 1.600	x 0.30	= 7.68	cum
For Ramp	2 x 1	x 4.500	x 3.000	x 0.30	= 8.10	cum
For Ramp	2 x 1	x 4.500	x 3.000	x 0.30	= 8.10	cum
Total					45.26	cum

Item No : 3
Providing and laying Cast in situ/Ready Mix cement concrete in M-10 of trap/ granite/ quartzite/ gneiss metal for foundation and bedding including bailing out water, formwork, laying/pumping, compacting, roughening them if special finish is to be provided, finishing if required and curing complete, with fully automatic micro processor based PLC with SCADA enabled reversible Drum Type mixer/concrete Batch mix plant (Pan mixer) etc. complete. With natural sand/V.S.I. quality Artificial Sand

For Footing bed concrete						
Column A	2 x 11	x 1.800	x 1.800	x 0.15	= 10.69	cum
Column B	2 x 5	x 1.600	x 1.600	x 0.15	= 3.84	cum
For Ramp	2 x 1	x 4.500	x 3.000	x 0.15	= 4.05	cum
For Ramp	2 x 1	x 4.500	x 3.000	x 0.15	= 4.05	cum
Total					22.63	cum

Item No : 4

Providing and laying in situ/Ready Mix cement concrete M-20 of trap / granite /quartzite/ gneiss metal for R.C.C. work in foundations like raft, strip foundations, grillage and footings of R.C.C. columns and steel stanchions etc. including bailing out water, formwork, laying/pumping cover blocks, compaction and curing roughening the surface if special finish is to be provided (Excluding reinforcement and structural steel) etc. complete, with fully automatic micro processor based PLC with SCADA enabled reversible Drum Type mixer/ concrete Batch mix plant (Pan mixer) etc. complete. With natural sand/V.S.I. quality Artificial Sand

For Footing	2	x	11	x	1.60	x	1.30	x	0.45	=	20.59	Cum	
Column A	2	x	5	x	1.50	x	1.30	x	0.45	=	8.68	Cum	
Column B											Total	29.27	cum

Item No : 5

Providing and laying Cast in situ/Ready Mix cement concrete M-20 of trap / granite /quartzite/ gneiss metal for R.C.C. columns as per detailed designs and drawing or as directed including centering, formwork, cover blocks, laying/pumping, compaction finishing the formed surfaces with cement mortar 1:3 of sufficient minimum thickness to give a smooth and even surface or roughening if special finish is to be provided and curing etc. complete,(Excluding reinforcement and structural steel).with fully automatic micro processor based PLC with SCADA enabled reversible Drum Type mixer/ concrete Batch mix plant (Pan mixer) etc. complete. With natural sand/V.S.I. quality Artificial Sand

For columns	2	x	11	x	0.23	x	0.45	x	3.600	=	8.20	Cum	
Column A	2	x	5	x	0.23	x	0.38	x	3.600	=	3.15	Cum	
Column B											Total	11.35	Cum

Item No : 6

Providing and laying Cast in situ/Ready Mix cement concrete M-20 of trap / granite /quartzite/ gneiss metal for R.C.C. beams and lintels as per detailed designs and drawings or as directed including centering, formwork, cover blocks, laying/pumping, compaction and roughening the surface if special finish is to be provided and curing etc. complete. (Excluding reinforcement and structural steel). with fully automatic micro processor based PLC with SCADA enabled reversible Drum Type mixer/ concrete Batch mix plant (Pan mixer) etc. complete. With natural sand/V.S.I. quality Artificial Sand

Ground & Tie Beams												
GB1	20	x	4.050	x	0.23	x	0.45	=	8.384	Cum		
GB2	12	x	3.600	x	0.23	x	0.45	=	4.471	Cum		
TB1	9	x	24.080	x	0.23	x	0.30	=	14.954	Cum		
PB1	20	x	4.050	x	0.23	x	0.30	=	5.589	Cum		
PB2	12	x	3.600	x	0.23	x	0.30	=	2.981	Cum		
Lintels												
V	27	x	1.500	x	0.23	x	0.23	=	2.142	Cum		
over brick work	20	x	4.05	x	0.23	x	0.23	=	4.285	Cum		
	12	x	3.60	x	0.23	x	0.23	=	2.285	Cum		
										Total	45.091	Cum

Item No : 7

Providing and laying Cast in situ/Ready Mix cement concrete M-20 of trap/ granite / quartzite/ gneiss metal for R.C.C. slabs and landings as per detailed designs and drawings including centering, formwork, cover blocks, laying/pumping, compaction finishing the formed surfaces with cement mortar 1:3 of sufficient minimum thickness to give a smooth and even surface or roughening if special finish is to be provided and curing etc. complete, (Excluding reinforcement and structural steel), with fully automatic micro processor based PLC with SCADA enabled reversible Drum Type mixer/ concrete Batch mix plant (Pan mixer) etc. complete. With natural sand/V.S.I. quality Artificial Sand

warehouse	1	x	1	x	42.54	x	24.08	x	0.23	=	235.60	Cum	
											Total	235.60	Cum

Item No : 8

Providing and laying Cast in situ/Ready Mix cement concrete M-20 of trap/ granite/ quartzite/ gneiss metal for R.C.C. chajja as per detailed design and drawings including centering, formwork, cover blocks compacting, curing, finishing and roughening the surface if special finish is to be provided and curing complete. (Excluding reinforcement and structural steel), with fully automatic micro processor based PLC with SCADA enabled reversible Drum Type mixer/ concrete Batch mix plant (Pan mixer) etc. complete. With natural sand/V.S.I. quality Artificial Sand

Over Windows (G.F)

D

	1	x	1	x	0.450	x	1.300	x	0.110	=	0.064	Cum	
											Total	0.06	Cum

Item No : 9

Providing second class Burnt Brick masonry with conventional/ I.S. type bricks in cement mortar 1:6 in foundations and plinth of inner walls/ in plinth external walls including bailing out water manually, striking joints on unexposed faces, raking out joints on exposed faces and watering etc. Complete.

For Ground floor

					20	x	4.050	x	0.23	x	1.20	=	22.356	Cum
					12	x	3.600	x	0.23	x	1.20	=	11.923	Cum
For Septic Tank	L/W	1	x	2	x	3.16	x	0.23	x	1.80	=	2.62	Cum	
	C/W	1	x	2	x	1.50	x	0.23	x	1.80	=	1.24	Cum	
											Total	38.14	Cum	

Item No : 10

Filling in plinth and floors with contractors material/brought from outside and approved by Engineer incharge in layers of 15 cm to 20 cm including watering and compaction etc. complete.

Godown Hall

	1	x	1	x	42.54	x	0.80	x	24.08	=	819.9	Cum	
											Total	819.9	Cum

Item No : 11

Providing soling using 80 mm size trap metal in 15 cm. layer including filling voids with Crushed sand/grit, ramming, watering etc. complete.

Godown Hall

1	x	1	x	42.54	x	0.30	x	24.08	=	307.31	Cum	
										<u>Total</u>	<u>307.31</u>	Cum

Item No : 12

Providing second class Burnt Brick masonry with conventional/ I.S. type bricks in cement mortar 1:6 in superstructure including striking joints, raking out joints, watering and scaffolding etc. Complete

wall

1	18	x	4.050	x	0.23	x	2.50	=	41.918	Cum
	10	x	3.600	x	0.23	x	2.50	=	20.700	Cum

Window
Ventilator
Door

									<u>Total</u>	<u>62.62</u>	Cum	
W	1	x	1	x	1.50	x	0.23	x	1.20	=	0.41	Cum
V	1	x	27	x	1.50	x	0.23	x	0.75	=	6.99	Cum
D	1	x	1	x	1.00	x	0.23	x	2.50	=	0.58	Cum
										<u>Total</u>	<u>7.98</u>	Cum

Net:	62.62	-	7.98		<u>Total</u>	<u>54.64</u>	<u>cum</u>
------	-------	---	------	--	--------------	--------------	------------

Item No : 13

Providing and fixing in position TMT - FE - 500 bar reinforcement of various diameters for R.C.C. pile caps, footings, foundations, slabs, beams columns, canopies, staircase, newels, chajjas, lintels pardis, copings, fins, arches etc. as per detailed designs, drawings and schedules. including cutting, bending, hooking the bars, binding with wires or tack welding and supporting as required complete.

G.F.										
For Footings	29.27	Cum	-	@	100.00	Kg/Cum	2927.00	Kg		
For Columns	11.35	Cum		@	150.00		1702.50	Kg		
For Beams & Lintels	45.09	Cum		@	150.00		6763.65	Kg		
For main slab	235.60	Cum		@	80.00		18848.00	Kg		
for Chhajjas	0.06	Cum		@	100.00		6.40	Kg		
								30247.55	Kg	
								<u>Say Total</u>	<u>30.25</u>	<u>MT</u>

Ground floor

Loured Window

$$V \quad 1 \times 1 \times 0.60 \times \quad \times \quad 0.45 = 0.27 \quad \text{Sqm}$$

Total **0.27** **Sqm**

Item No : 22

Providing and fixing M.S. grill door 24 Kilogram/ One Square Metre of various size as per detailed drawings without hot dip coating, iron fixtures and fastenings and 3 coats of oil painting etc

Ground floor

Window

$$W \quad 1 \times 1 \times 1.50 \times \quad \times \quad 1.20 = 1.80 \quad \text{Sqm}$$

$$V \quad 1 \times 26 \times 1.50 \times \quad \times \quad 0.75 = 29.25 \quad \text{Sqm}$$

Total **31.05** **Sqm**

Item No : 23

Providing and fixing rolling shutter fabricated from steel laths of minimum thickness 0.9 mm with lock plate of 3.15 mm thickness reinforced with 35 x 35 x 5 mm angle section fitted with sliding bolts and handles for both sides, deep M.S. channel section of depth and thickness not less than 65 mm and 3.15 mm respectively with hold fast arrangements, M.S. Bracket plate 300 x 300 x 3.15 mm minimum size and shape with square bar, suspension shaft of minimum 32 mm diameter, hood cover of M.S. sheet not less than 0.9 mm thickness and of any size at top and safety devices including mechanical gear operation arrangement consisting of worm gear wheels and worms of high grade cast iron or mild steel and one coat of red lead primer etc. complete. (I.S. 62481979) (Without mechanical gear)

Godown Hall

Godown hall

$$1 \times 4 \times 3.65 \times 6.00 \times \quad = 87.60 \quad \text{Sqm}$$

Total **87.60** **Sqm**

Item No : 24

Providing and applying washable oil-bound distemper of approved colour and shade to old and new surfaces in two coats including scaffolding, preparing the surfaces. (excluding the primer coat.) etc. complete.

Basement

Qty as per item No (14+15)

293.33 Sqm

Total **293.33** **Sqm**

Item No : 25

Providing and applying three coats of water proof cement paint of approved manufacture and of approved colour to new plastered surfaces including scaffolding if necessary, cleaning and preparing the surface, watering for two days etc. complete.

Basement

Qty as per item No (17)

493.66 Sqm

Total **493.66** **Sqm**

Item No : 26

Providing structural steel work in trusses, other similar trussed purlins and members with all bracing, gusset plates etc. as per detailed designs and drawings or as directed including cutting, fabricating, hoisting, erecting fixing in position, Making riveted/ bolted/ welded connection and one coat of anticorrosive paint and over it 2 coats of oil painting approved quality and shade etc. complete.
For Truss

$$C/W \quad 1 \times 9 \times 3100.00 \times \quad \times 1.00 = 27900.00 \quad \text{kg}$$

Total	27.90	M.T.
--------------	--------------	-------------

Item No : 27

Providing and fixing corrugated galvanised iron sheets of 0.63mm thick (24 B.W.G.) for roofing without wind tiles including fastening with galvanised iron screws and bolts, lead and bitumen washers as per drawing etc. complete. (Weight of 5.5 kg/sq.m.).

$$1 \times 1 \times 23.54 \times 43.00 \times \quad = 1012.22 \quad \text{Sqm}$$

$$1 \times 4 \times 4.50 \times 3.00 \times \quad = 54.00 \quad \text{Sqm}$$

Total	1066.22	Sqm
--------------	----------------	------------

Item No : 28
0

As per separate statement

Total	200.49	Cum
Total	1172.06	Cum

Item No 46 :- Material testing charges

CEMENT

No of test	Setting time (Initial &	Compressive strength	Testing frequency	Total
1			0 To 50.00 M.T.	3770.00

AGGREGATE

No of test	Sive Analysis	Soundness	Testing frequency	Total
1			0 To 1000 cum	2600.00

SAND

No of test	Fineness Modulus	Soundness	Testing frequency	Total
1			Per source	1380.00

STEEL

No of test	Up to 16 mm	Above 16 mm	Testing frequency	Total
1	1275.00	1595.00	0 To 50.00 M.T.	2870.00

CERAMIC TILES/VITRIFIED TILES

No of test	Water absorption		Testing frequency	Total
1			Each 2000 no of tiles	1595.00

BRICKS

No of test	Water absorption	Compressive strength	Testing frequency	Total
1			Each 50000 consignment	2175.00

MORTOR

No of test	Water absorption	Compressive strength	Testing frequency	Total
10	690.00		Per working day 6 cubes	6900.00

CONCRETE

No of test		Compressive strength	Testing frequency	Total
10	690.00		00 To 5.00 cum	6900.00

P V Patil

Prajakta V. Patil (BE.Civil)
Consulting Engineer & Cont.
Pachora Rd, Jamner (M.L.No.151.....)

Royalty Statement

I. No	Item	Quantity	Material consumption		Material required	
			Rubble stones	Sand	Rubble stones Metal	Sand
1	2	2	3	4	5	6
3	Providing and laying Cast in situ/Ready	22.63		0.47		10.64
4	Providing and laying in situ/Ready Mix	29.27		0.425		12.44
5	Providing and laying Cast in situ/Ready	11.35		0.425		4.82
6	Providing and laying Cast in situ/Ready	45.09		0.425		19.16
7	Providing and laying Cast in situ/Ready	235.60		0.425		100.13
8	Providing and laying Cast in situ/Ready	0.06		0.425		0.03
9	Providing second class Burnt Brick	38.14		0.32		12.2
12	Providing second class Burnt Brick	54.64		0.32		17.48
14	Providing internal cement plaster 20mm	291.71		0.025		7.29
15	Providing internal cement plaster 6 mm	1.62		0.0076		0.01
17	Providing sand faced plaster externally in	493.66		0.033		16.29
23	Providing and fixing rolling shutter	87.60				
						200.49
200.49						

P. V. Patil
Prajka V. Patil (BE.Civil)
Consulting Engineer & Cont.
Pachora Rd, Jamner (M.L.No.151.....)

Name of work :-

Proposed Construction of Warehouse at Gat No 72/2 of shivar Kasali at village Kasali Tal. Janner ; Dist -Jalgaon

RATE ANALYSIS

I.No	Item	SSR. - 2022-23		Total Lead Charges	Total Rate.	Unit.
		I.No.	Rate			
1	2	3	4	12	16	15
1	Excavation for foundation in earth, soil of all types, sand, gravel and soft murum, including removing	21.02	207.00		207.00	Cu.M.
2	Providing dry/ trap/ granite/ quartzite/ gneiss rubble stone soling 15 cm to 20 cm thick including	21.38	1382.00	627.84	2009.84	Cu.M.
3	Providing and laying Cast In situ/Ready Mix cement concrete in M-10 of trap/ granite/	24.01	5830.00	771.00	6601.00	Cu.M.
4	Providing and laying in situ/Ready Mix cement concrete M-20 of trap / granite /quartzite/	25.11	7104.00	746.95	7850.95	Cu.M.
5	Providing and laying Cast in situ/Ready Mix cement concrete M-20 of trap / granite /quartzite/	25.31	13783.00	746.95	14529.95	Cu.M.
6	Providing and laying Cast in situ/Ready Mix cement concrete M-20 of trap / granite /quartzite/	25.5	12269.00	746.95	13015.95	Cu.M.
7	Providing and laying Cast in situ/Ready Mix cement concrete M-20 of trap/ granite / quartzite/	25.7	13932.00	746.95	14678.95	Cu.M.
8	Providing and laying Cast in situ/Ready Mix cement concrete M-20 of trap/ granite/ quartzite/	26.05	13932.00	746.95	14678.95	Cu.M.
9	Providing second class Burnt Brick masonry with conventional/ I.S. type bricks in cement mortar 1:6	27.01	7755.00	1326.06	9081.06	Cu.M.
10	Filling in plinth and floors with contractors material/brought from outside and approved by	21.37	599.00		599.00	Cu.M.
11	Providing soling using 80 mm size trap metal in 15 cm. layer including filling voids with Crushed	21.4	1454.00	491.80	1945.80	Cu.M.
12	Providing second class Burnt Brick masonry with conventional/ I.S. type bricks in cement mortar 1:6	27.05	7994.00	1326.06	9320.06	Cu.M.
13	Providing and fixing in position TMT - FE - 500 bar reinforcement of various diameters for R.C.C.	26.33	89703.00	308.99	90011.99	M.T.
14	Providing internal cement plaster 20mm thick in Single coats in cement mortar 1:5 without neeru	32.06	375.00	25.76	400.76	Sq.M.
15	Providing internal cement plaster 6 mm thick in a single coat in cement mortar 1:4 without neeru	32.02	209.00	7.79	216.79	Sq.M.
16	Providing neeru finish to plastered surfaces in all positions including scaffolding and curing etc.	32.15	65.00		65.00	Sq.M.
17	Providing sand faced plaster externally in cement mortar using approved screened sand, in all	32.11	639.00	34.55	673.55	Sq.M.
18	Providing and fixing M40 grade thick vibrated pull cast or similar type concrete frame with chamfer	39.57	1144.00		1144.00	R.M.
19	Providing and fixing solid core flush door shutter commercial in single leaf 32 mm	39.1	2913.00		2913.00	Sq.M.

1 No	Item	SSR. - 2022-23		Total Lead Charges	Total Rate.	Unit.
		I.No.	Rate			
1	2	3	4	12	16	15
20	Providing and fixing in position (as per 1868 / 1982) Aluminium sliding window of three	39.42	5425.00		5425.00	Sq.M.
21	Providing and fixing in position powder coated aluminium louvered windows / ventilator of	39.68	3467.00		3467.00	Sq.M.
22	Providing and fixing M.S. grill door 24 Kilogram/ One Square Metre of various size as	39.31	3258.00		3258.00	Sq.M.
23	Providing and fixing rolling shutter fabricated from steel laths of minimum thickness 0.9 mm	39.24	4829.00		4829.00	Sq.M.
24	Providing and applying washable oil-bound distemper of approved colour and shade to old and	36.09	29.00		29.00	Sq.M.
25	Providing and applying three coats of water proof cement paint of approved manufacture and of	35.15	104.00		104.00	Sq.M.
26	Providing structural steel work in trusses, other similar trussed purlins and members with all	23.04	119459.00		119459.00	Sq.M.
27	Providing and fixing corrugated galvanised iron sheets of 0.63mm thick (24 B.W.G.) for roofing	38.04	870.00		870.00	Sq.M.
28			216.18		216.18	
	Sand		237.37		237.37	

P. Radil
Prajakta V. Patil (BE.Civil)
Consulting Engineer & Cont.
Pachora Rd, Jamner (M.L.No.151.....)

Name of work :-
Proposed Construction of Warehouse at Gat No 72/2 of shivar Kasali at village Kasali Tal. Jamner ; Dist -Jalgaon

RATE ANALYSIS (Lead Charges & Diff in Rate of Materials)

I No	Item	SSR- 22-23														Total Lead Charges	Unit.		
		I.No.	Rubble	Sand	Cu Metal	Bricks	Cement	Steel	10	11	12	13	14	15	16				
1	2	3	4	5	6	7	8	9	10	11	12	13	14	15	16				
1	Excavation for foundation in earth, soil of all types, sand, gravel/ gneiss rubble stone	21.02																	
2	Providing dry/ trap/ granite/ quartzite/ gneiss rubble stone	21.38	1.25	627.8															
3	Providing and laying Cast in situ/Ready Mix cement	24.01			0.470	443.7	0.94	259.36			0.2200	67.98							
4	Providing and laying in situ/Ready Mix cement	25.11			0.425	401.2	0.85	234.53			0.3600	111.24							
5	Providing and laying Cast in situ/Ready Mix cement	25.31			0.425	401.2	0.85	234.53			0.3600	111.24							
6	Providing and laying Cast in situ/Ready Mix cement	25.5			0.425	401.2	0.85	234.53			0.3600	111.24							
7	Providing and laying Cast in situ/Ready Mix cement	25.7			0.425	401.2	0.85	234.53			0.3600	111.24							
8	Providing and laying Cast in situ/Ready Mix cement	26.05			0.425	401.2	0.85	234.53			0.3600	111.24							
9	Providing second class Burnt Brick masonry with	27.01			0.320	302.1			1.00	1001.75	0.0720	22.25							
10	Filling in plinth and floors with contractors	21.37																	
11	Providing soling using 80 mm size trap metal in 15 cm. layer	21.4	1.25	491.8															
12	Providing second class Burnt Brick masonry with	27.05			0.320	302.1			1.00	1001.75	0.0720	22.25							
13	Providing and fixing in reinforcement TMT - FE - 500 bar	26.33														1	308.99	308.99	M.T.

I No	Item	SSR:- 22-23											Total Lead Charges	Unit.	
		L.No.	Rubble	Sand	Cru Metal	Bricks	Cement	Steel	10	11	12	13			14
1	2	3	4	5	6	7	8	9	10	11	12	13	14	10	16
14	Providing internal cement plaster 20mm thick in Single	32.06			0.025	23.599					0.0070	2.16		25.76	Sq.M.
15	Providing internal cement plaster 6 mm thick in a single	32.02			0.0076	7.174					0.0020	0.62		7.79	Sq.M.
16	Providing neeru finish to plastered surfaces in all	32.15													Sq.M.
17	Providing sand faced plaster externally in cement mortar	32.11			0.033	31.151					0.0110	3.40		34.55	Sq.M.
18	Providing and fixing M40 grade thick vibrated pull cast	39.57													R.M.
19	Providing and fixing solid core flush door shutter	39.1													Sq.M.
20	Providing and fixing in position (as per 1868 /	39.42													Sq.M.
21	Providing and fixing in position powder coated	39.68													Sq.M.
22	Providing and fixing M.S. grill door 24 Kilogram/ One Square	39.31													Sq.M.
23	Providing and fixing rolling shutter fabricated from steel	39.24													Sq.M.
24	Providing and applying washable oil-bound distemper	36.09													Sq.M.
25	Providing and applying three coats of water proof cement	35.15													Sq.M.
26	Providing structural steel work in trusses, other similar trussed	23.04													Sq.M.
27	Providing and fixing corrugated galvanised iron	38.04													Cu.M.
28															

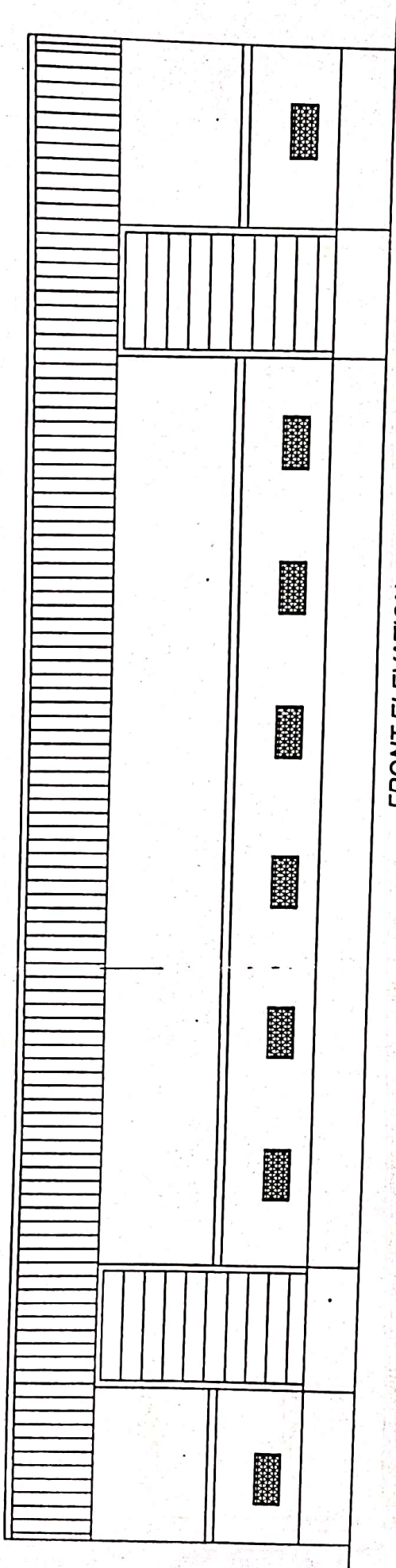
P. V. Patil
Prajakta V. Patil (BE, Civil)
 Consulting Engineer & Cont.
 Pachora Rd, Jamner (M.L.No.151)

Name of work :-
Proposed Construction of Warehouse at Gat No 72/2 of shivar Kasali at village Kasali Tal. Jamner ; Dist -
Jalgaon

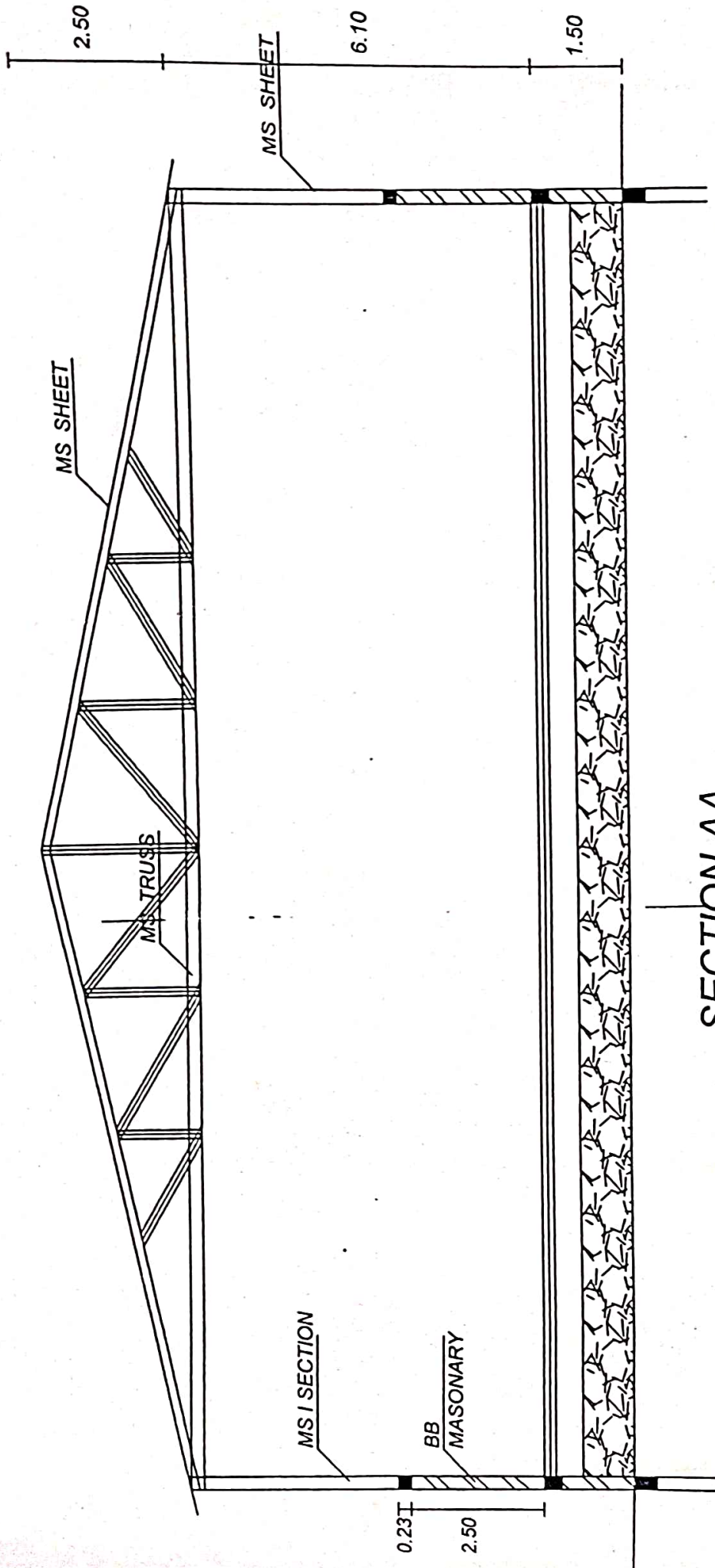
LEAD STATEMENT

Sr.No	Material	Lead Km.	Lead Charges (Rs/Cum)		Source
			Gross	Net	
1	2	3	4	6	
1	Rubble Stone	15.00	502.27	502.27	limited 10.00 Km
2	60/40 mm Metal	15.00	393.44	393.44	limited 10.00 Km
3	HM/SM	10.00	330.77	330.77	limited 10.00 Km
4	Sand	55.00	943.96	943.96	Girana river
4	Crushed Metal	15.00	275.92	275.92	Jamner
5	Disposing off material	3.00	219.98	219.98	limited 3.00 Km
5	Cement	17.00	308.99	308.99	Jamner
7	Steel	17.00	308.99	308.99	Jamner
8	Flooring	9.50	30.90	30.90	Jamner
9	Bricks	45.00	1001.75	1001.75	Sakegaon (N.H.-6)

P. V. Patel
Prakta V. Patel (BE.Civil)
Consulting Engineer & Cont.
Pachora Rd, Jamner (M.L.No. 151)



FRONT ELEVATION



2.50

MS SHEET

6.10

1.50

MS SHEET

MS TRUSS

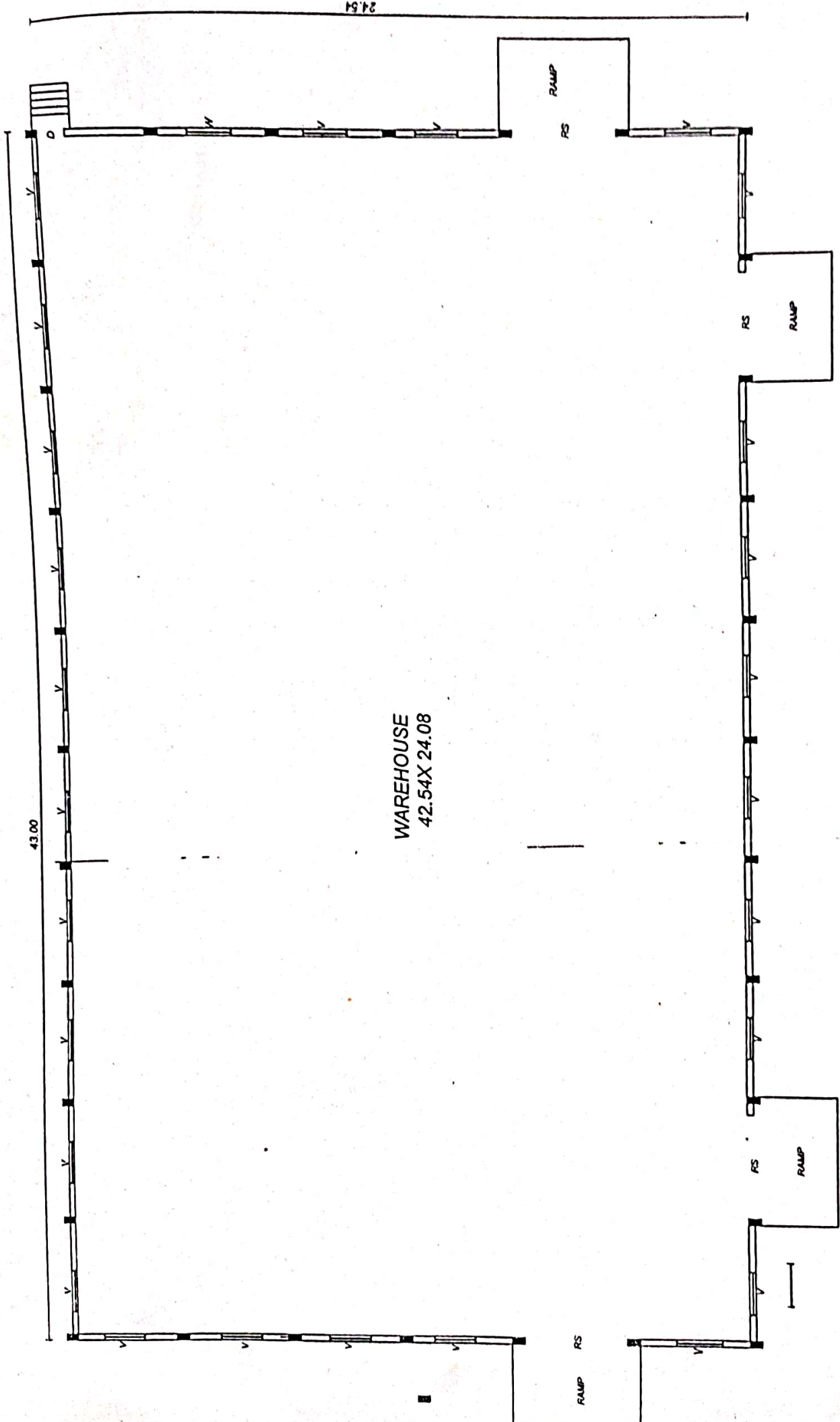
MS I SECTION

BB
MASONARY

0.23

2.50

SECTION AA



WAREHOUSE
42.54X 24.08

G. F. PLAN

P. Patel
Prajakta V. Patil (BE. CIVIL)
Consulting Engineer & Const.
Pachora Rd, Jamner (M.L.No. 15)